

Union Street Fiber

Hand - Dyed & Hand - Spun

- Artisan Yarns and Notions -

7723 Union Avenue - Elkins Park, PA - 19027
www.UnionStreetFiber.com

Π, Φ, e Irrationally Constant Mittens



Materials: for one pair - 3 balls worsted wool, 2 Main Color and 1 Contrast Color – I used Dalegarn Falk (50g. 116 yd) and Heilo (50g. 109 yd)

Gauge: 5 stitches/6.5 rows to the inch, in pattern, blocked

Needles: A set of double points or 2 long circular needles in a size 5 or whatever is required for your gauge.

Finished Size: Woman's med-lg. mitten: 7" base of palm to finger-tip, 8" circumference above thumb

Begin Cuff:

Cast on 48 stitches and divide evenly among 3 needles or in half between the two circulars.

Join, without twisting and work 1 row in MC in a k3 p1 rib. Work about 3 inches of ribbing, working 3 sets of 3 rows contrasting color stripes working 6 rows of main color in between each stripe set. After last contrasting color row, switch to main color and stockinette and work one round increasing 2 stitches evenly to 50 stitches. You can add a row or two in MC here to add length if necessary.

Begin Chart:

Follow charts from this point, working in stockinette and carrying the contrast color across the back of the work, catching it every 2-3 stitches to avoid long floats. Begin carrying the contrasting yarn on the first stockinette round and continue to carry the contrasting yarn along all the way up the mitten tip, this provides an extra layer throughout.

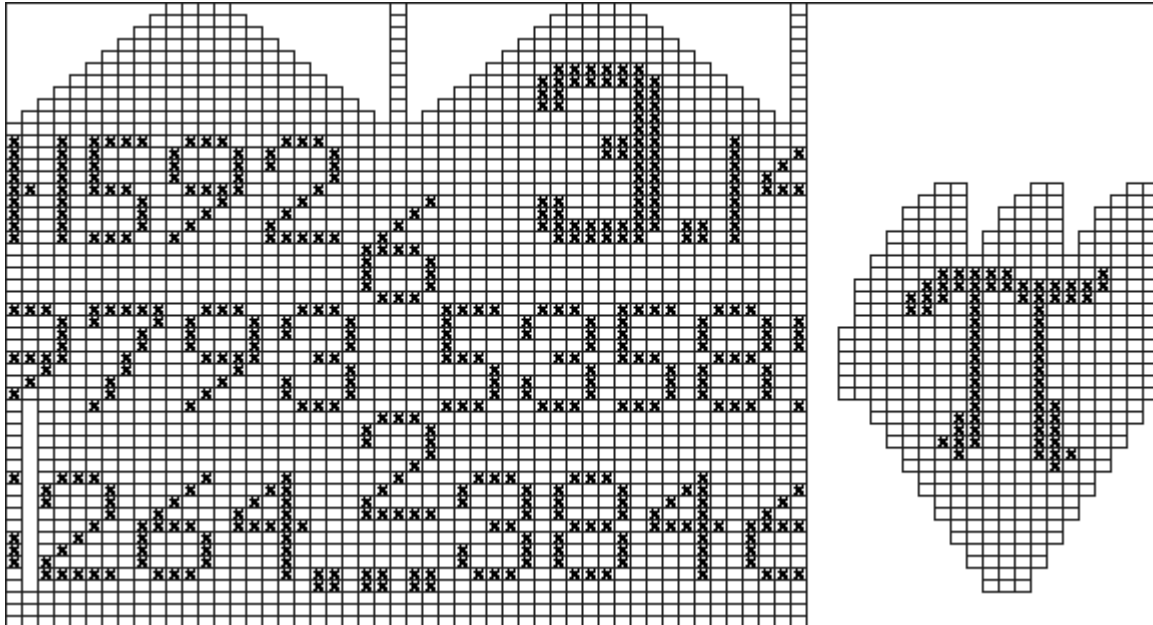
Notes on Charts:

The charts are a bit of a bear to follow since the numbers are not a repeating pattern – thanks to duplicate stitch you can fix your mistakes or duplicate-stitch the whole thing if you want to. I found it easier to focus on each number rather than each row.

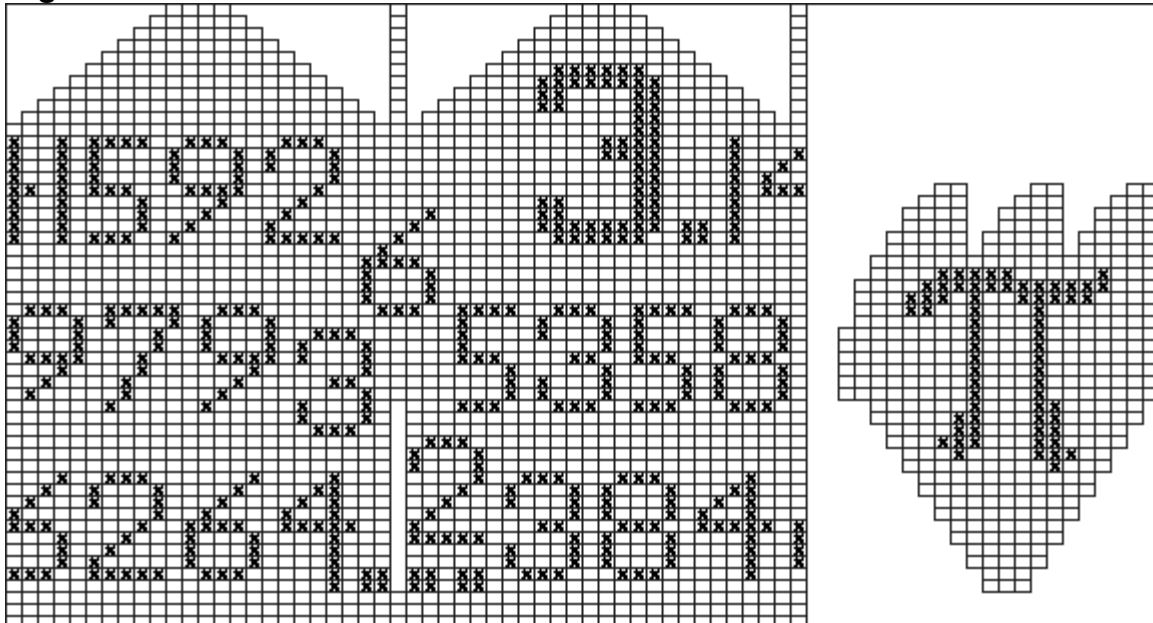
There is a left and right hand chart for “pi” in case you want a pair of “pi” mittens. For “phi” and “e” the charts are for the right hand.

Pi Chart

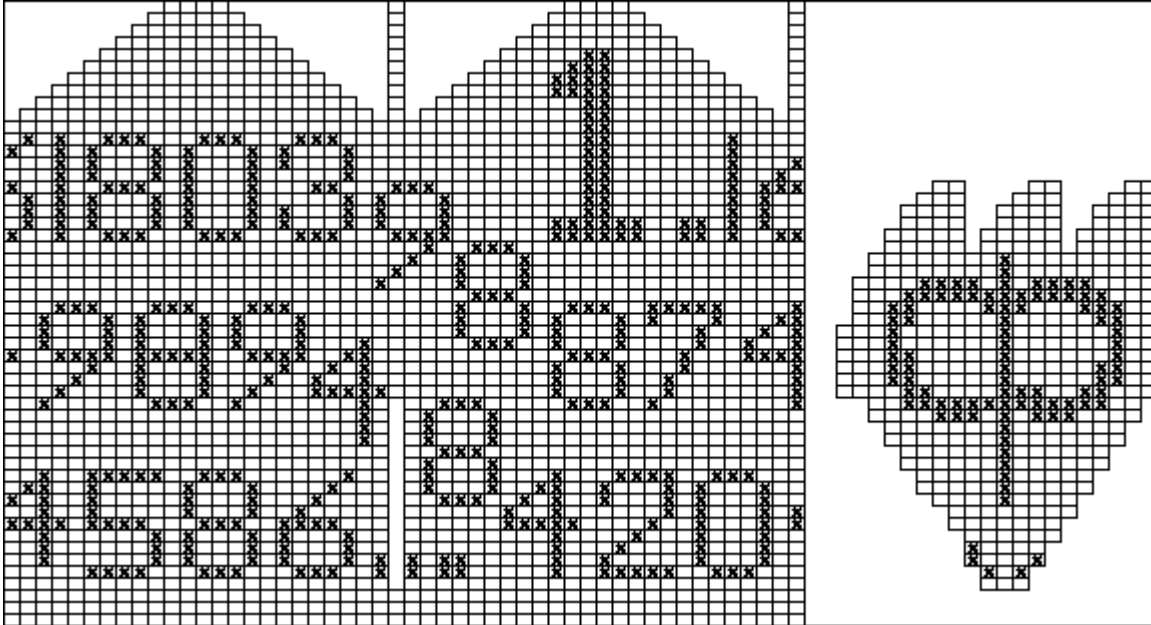
Left hand:



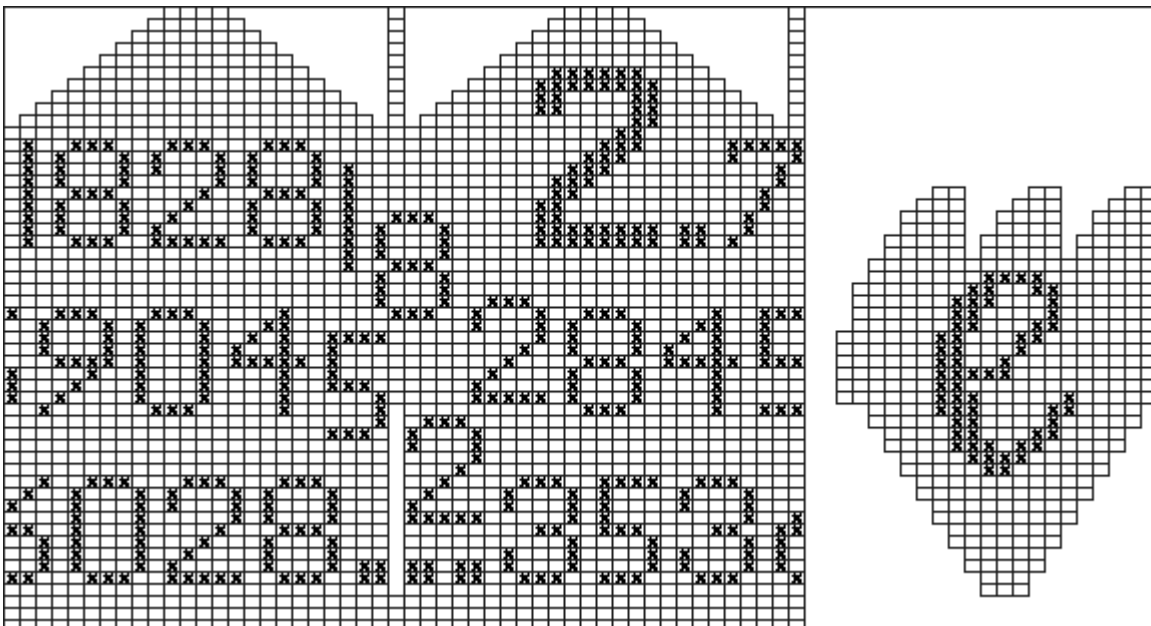
Right hand:



Phi Chart (right hand):



***e* Chart (right hand):**



Copyright © 2008 Lisa Stockebrand
7723 Union Ave. Philadelphia, PA 19027
For private non-commercial use only